

HIZERO®

4-in-1 Bionic Mop (F801)

User Manual

www.hizero.com



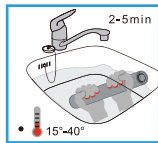
Bringing the
World into
Bionic Cleaning
Era

Quick Start Guide

Assembling



Take out the trash container Open the cleaning head cover to take out the trash container.



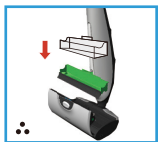
Insert the cleaning roller

Place the lower body on its side, find the drive motor and gently pull it out to a right angle (not to exceed 45°), insert the cleaning roller onto the drive motor, then push into the cleaning head till the lateral button in place.

Note:

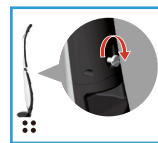
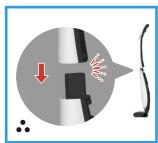
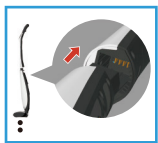
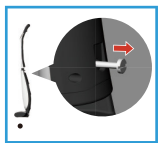
1. For the first use, make sure to soak the cleaning roller till soft before inserting it onto the drive motor. (Refer to Section 2 **Assembling** on Page 6)

2. During daily use, in case the cleaning roller becomes dry, soak the cleaning roller till soft.



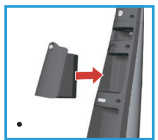
Insert the trash container

Place the lower body in an upright position, open the cleaning head cover, insert the trash container and press it in place, then place one new disposable trash container optional and close the cleaning head cover.



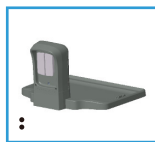
Assemble the upper and lower body

Remove the quick-mount screw from the handle, then insert the handle onto the lower body of the appliance properly. Insert the quick-mount screw and tighten it with a coin or screwdriver.



Insert the battery

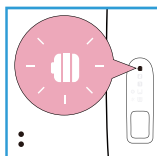
Insert the battery into the battery compartment on the lower body and tighten the screw with a coin or screwdriver.



Assemble the charging base

Connect the two components of the charging base.

Connect the power adapter, and the excess power line can be stored in the cable slot.



Ready for use

Check whether it is necessary to charge the product first (blue battery indicator means a full battery) before use. The charging time is a maximum of 4 hours.

Use Guidance



Fill the clean water tank



Unlock the product



Take out the dirty water tank



Throw away the used disposable trash container



Insert the clean water tank



Enjoy your cleaning



Empty the dirty water tank



Use Guidance

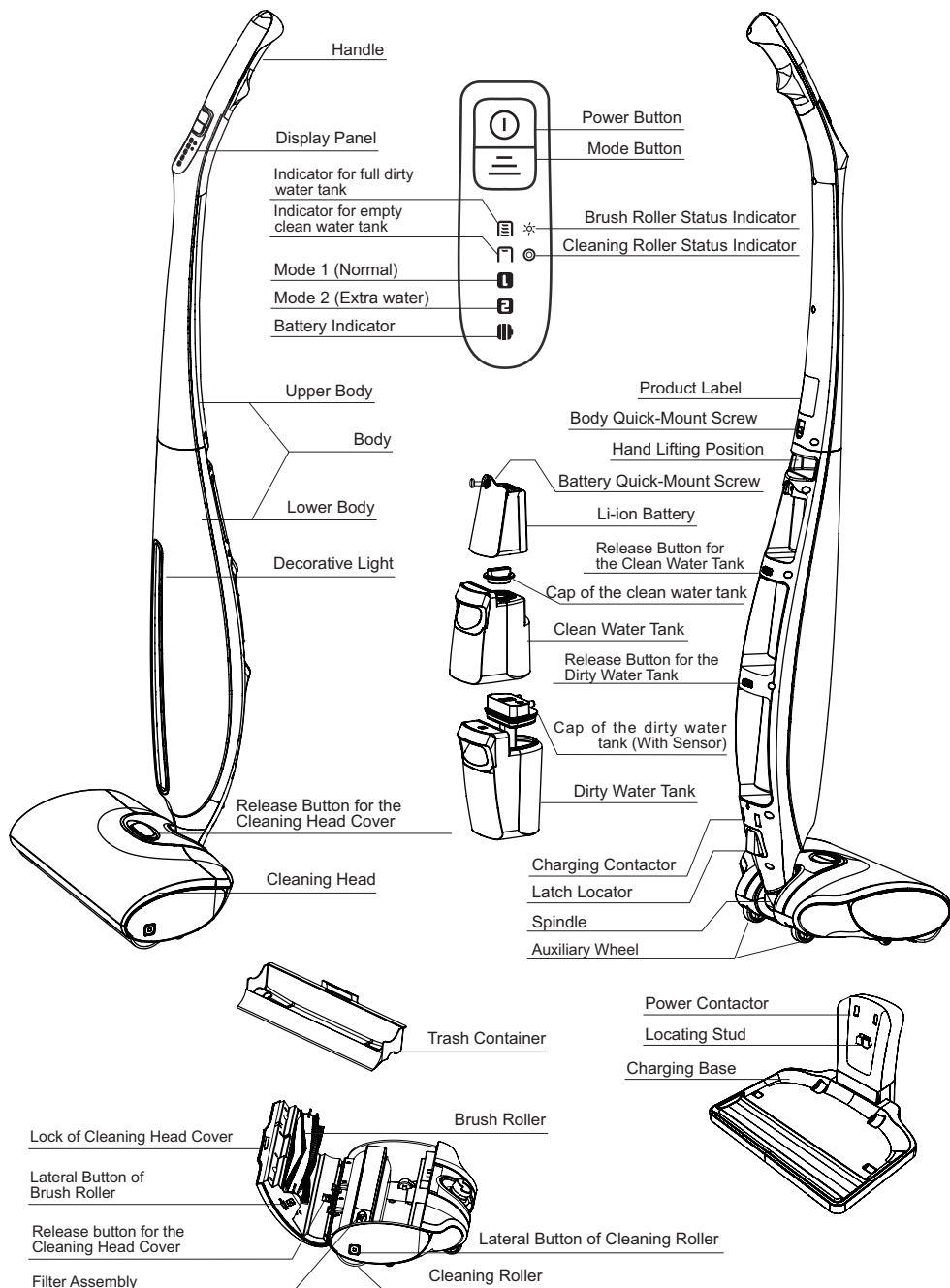


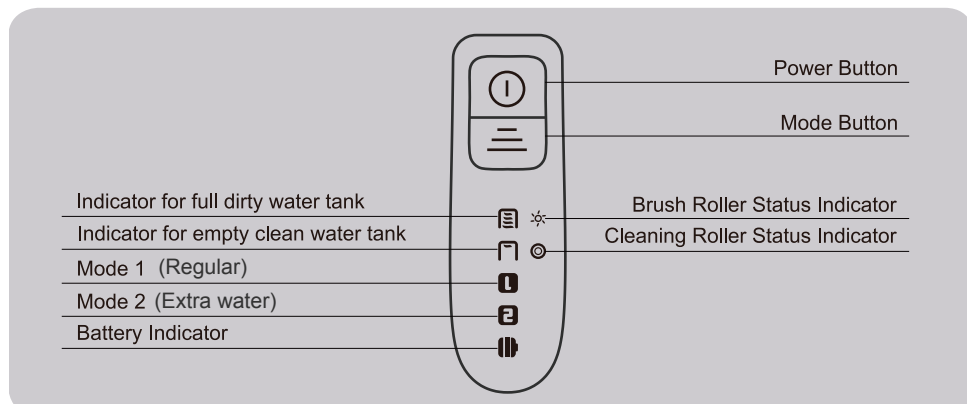
To ensure effective cleaning, make sure that the hard waste to be collected is in front of the cleaning head.

Maintenance & Cleaning

Maximise your Hizero's cleaning power by maintaining the product regularly. See Section 5 **Maintenance & Cleaning** on page 10 for more instructions and tips.

Product View





Charging

Flashing Red: The product is charging.



Flashing Blue: Something is wrong and contact the Customer Service Centre for a solution.

Solid Blue: The product is charged fully.

In Use

Flashing red: Too low battery to continue working.



Solid red: Low battery and the product will automatically power off within 3 minutes.

Solid blue: Sufficient power.



Mode 2: Extra mode, the appliance will use more water. A full tank (500ml) of clean water can be used for approximately 5 minutes (half the time)



Mode 1: Normal mode, the appliance will use less water. A full tank (500ml) of clean water can be used for approximately 10 minutes (should be used for regular clean)



Flashing: The water in the clean water tank is insufficient. The product will stop working and automatically switch-off after 30 seconds.

Solid red: Something is wrong and contact the Customer Service Centre for a solution.



Flashing: A. The dirty water tank is full.

B. The sensor on the cap of the dirty water tank is dirty.

Solid red: A. The dirty water tank may not be inserted properly.

B. Something is wrong and contact the Customer Service Center for a solution.



Flashing: Maybe the cleaning roller is jammed by foreign object.

Solid red: Replace the cleaning roller with a new one roller has reached end of life, to reset press the mode button till the indicator goes out.



Flashing: The cleaning head cover is not closed properly.

Solid red: A. Maybe the brush roller is jammed by foreign object. B. Something is wrong and contact the Customer Service Center for a solution.



Solid blue: All is normal

Solid red: Something is wrong and check the display panel for more information.

Table of Contents

1 Introduction	5
1.1 Safety Instructions	5
1.2 Technical and Security Specifications	6
1.3 Self-Protection System	6
1.4 Intended Use	6
1.5 Floor Maintenance	6
2 Assembling	6
3 Preparation	7
3.1 Charging	7
3.2 Remove Large Objects Off the Floor 3.3	8
Filling the Clean Water Tank	8
3.4 Locking the Body	8
4 Operation	8
4.1 Unlock the Body	8
4.2 Start Cleaning	9
4.3 Indicator for A Full/Empty Water Tank	9
4.4 Empty the Dirty Water Tank	9
4.5 Empty the Trash Container	9
4.6 Self-Protection System	10
5 Maintenance & Cleaning	10
5.1 Maintenance	10
5.2 Clean the Water Tanks	10
5.3 Clean the Brush Roller	10
5.4 Clean the Cleaning Roller	10
5.5 Clean the Trash Container	11
5.6 Clean the Cleaning Head Cover	11
5.7 Clean the Water Sink Drain	11
5.8 Clean/Replace the Filter Assembly	12
6 Storing & Moving	12
6.1 Storing	12
6.2 Moving	12
7 Replacing	12
7.1 Replace the Brush Roller	12
7.2 Replace the Cleaning Roller	13
8 Ordering Accessories	13
9 Caring for the Environment	13
10 Warranty & After-sales	13
11 Troubleshooting	14

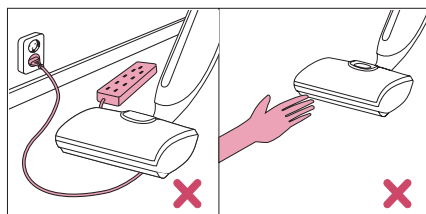
1 Introduction

Thank you for choosing HIZERO 4-in-1 Bionic Mop!
HIZERO 4-in-1 Bionic Mop is an intelligent floor cleaning machine based on innovative bionic technologies, which perfectly integrates the functions of sweeping, mopping, drying and cleaning roller's self-cleaning. Its advent is honored as "The second revolution in the floor cleaning field". The product has a built-in rechargeable battery and when cleaning the floor, the cleaning roller while can separate the solid trash from the liquid one, simultaneously, self-cleaning the roller. After use, all that needed is to discard the disposable trash container and empty the dirty water tank. It is featured by extremely high cleaning efficiency, simple operation and easy maintenance.
In this user manual, you will learn some tips to make the cleaning job as easy and efficient as possible.
Please read this user manual carefully before you use the product and save it for further reference.

1.1 Safety Instructions

1.1.1 Danger

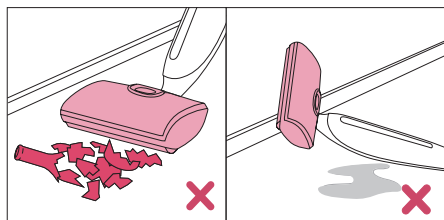
- To prevent electric shock, never move the product over floor/wall/plugged power cords.
- Keep all parts of the human body or large objects such as clothes away from the cleaning roller.



1.1.2 Caution

- The product must be removed from the charging base before cleaning or maintaining.
- Always switch off the product before you remove water tanks or open the cleaning head cover.
- To avoid any hazard, do not let the product clean sharp objects.
- To avoid any damage, never immerse the body of the product in water or any other liquid, nor rinse it under the tap.
- Never use the product to clean flammable or combustible liquid and do not put flammable or combustible liquids in the clean/dirty water tank.
- Regularly check the product and all parts, stop using if the product or the charging base is damaged, and bring it to an authorized service center.
- This product is not intended for use by persons (including children) with reduced physical, sensory or mental capabilities, or lack of experience and knowledge, unless they have been given supervision or instruction to use the product by a person responsible for their safety.
- Children should be supervised to ensure that they do not play with the product.
- Never store the product at a temperature lower than 0°C/32°F.

- Use only clean water or clean water with HIZERO cleaning solution in the clean water tank of the product.
- Do not put acetic acid (vinegar) or unauthorized detergent in the water tanks nor use the product to clean them.
- Do not put wax, oil or floor maintenance products that cannot be diluted in the clean water tank, or use the appliance to clean them.
- The model of the battery pack is F8Z-BTA01/F8Z-BTA02/F8Z-BTA03.
- Only change the product on original HIZERO charging base.
- Never use the battery for other purposes other than this product, and never expose it to heat (50°C/122°F+), outdoor or wet conditions.
- When removing or replacing the battery, keep the terminals away from other metal objects like nail clips, keys, bails, screws, etc. to avoid any thermal effect, smoke, fire or even explosion.
- Stop using the battery in case of leakage and call the Customer Service Center for special battery treatment immediately.
- Do not disassemble the battery without authorization in case of any abnormal situation.
- Do not discard used batteries at will as special battery treatment or recycling shall be required.
- Use only HIZERO authorized cleaning solution to prevent any damage to internal components.
- Never clean the cleaning roller with a sharp object, or the roller may be damaged while the cleaning performance may be reduced.
- When there is water in the water tanks, never put the product on its side or upside down in order to prevent any leakage.
- Clean the dirty water tank after every use to prevent the bacteria breeding or odour.
- Do not clean the cleaning roller, brush roller or water tanks in a dishwasher or washing machine.
- This product is intended for the indoor use only.



1.2 Technical and Security Specifications

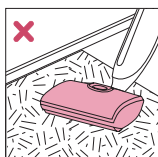
This product complies with the current recognized electrical product technical specifications and safety regulations. It is safe to use the product if the user operates according to the instructions of this user manual.

1.3 Self-Protection System

The product is equipped with an active protection system, and it will stop working and alert automatically if large objects like a towel or a patch of a curtain are rolled and stuck.

1.4 Intended Use

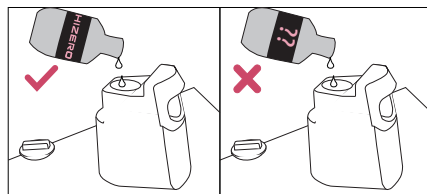
The product is used for water-proof hard floors (tile, marble, wooden, etc.) only. Do not use this product to clean carpets or other floors that are water-sensitive.



1.5 Floor Maintenance

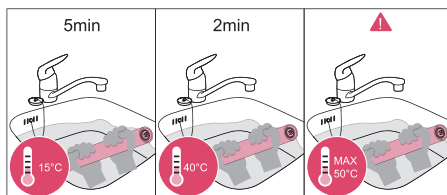
Follow the cleaning and maintaining instructions of the user manual, and simultaneously refer to the maintenance description of your floors.

HIZERO cleaning solution can be used to advance the cleaning performance. Do not add any unauthorized floor-care product into the water tank.

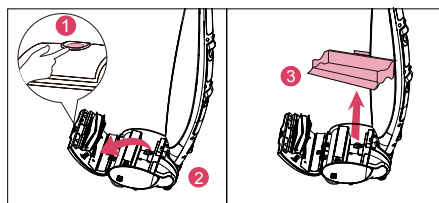


2 Assembling

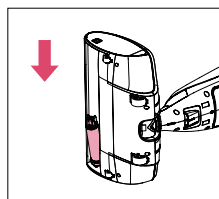
- 1 Open the package and take out the cleaning roller. Before installation, please immerse the whole cleaning roller in clean water (recommend 15°C-40°C), and evenly squeeze the entire body of the cleaning roller until the body is completely soft. Then, take out the soft cleaning roller and squeeze the excess water out to prepare for the following installation.



- 2 To open the cleaning head, press the "PRESS" button on the cleaning head cover to open the cover, then take out the trash container.

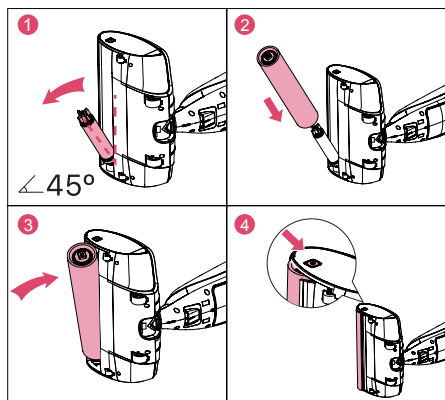


- 3 Close the cleaning head cover, put the lower body on its side on flat ground and make sure the lateral button of the cleaning roller is on the upside.

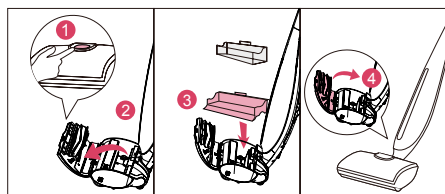


Note: Do not use the product for carpet.

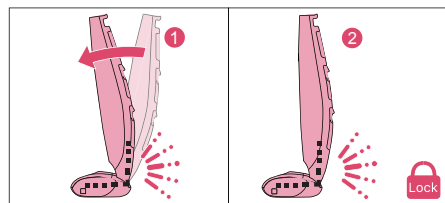
- 4 Insert the cleaning roller onto the drive motor (note: the maximum open angle of the drive motor is 45°), gently push and fix it into the cleaning head till the lateral button is in place.



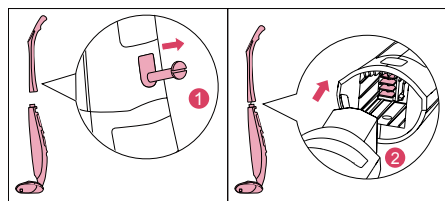
- 5 Place the lower body in upright position, open the cleaning head cover, insert the trash container and press it into place, then place a new disposable trash container optional. Close the cover until you hear a click to ensure the cover is closed well.



- 6 Push the lower body forward lightly until you hear a click which means the product is locked in a right position.

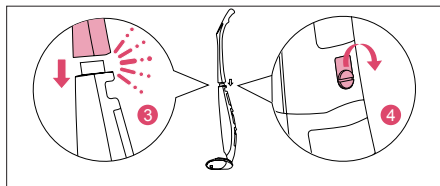


- 7 Take out the handle and remove the body quick-mount screw first. Then gently insert the handle onto the lower body and make sure the handle and the lower body of the appliance are connected closely.

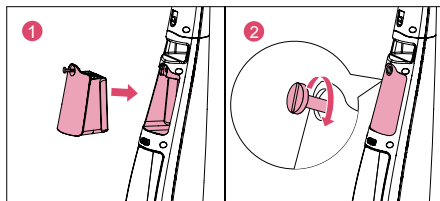


Note: If the appliance fails to start after the connection, please try again to insert the handle onto the lower body and restart the appliance.

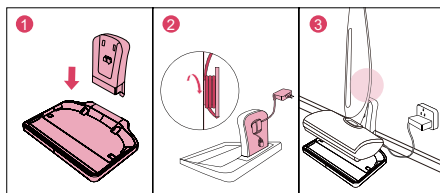
- 8 Insert the quick-mount screw into the bolt hole on the handle of the appliance and tighten it.



- 9 Insert the battery into the battery compartment on the lower body, tighten the screw with a coin or screwdriver and make sure the battery is installed well.



- 10 Assemble the two parts of the charging base. Connect the power adapter and put the excess power line in the special cable slot.

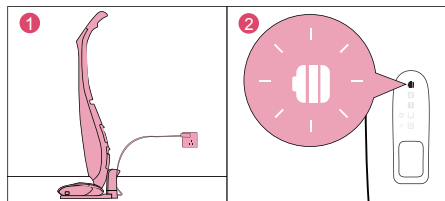


3 Preparation

3.1 Charging

- 1 Make sure the charging base and power adapter are connected well and plug the adapter in a properly grounded outlet.
- 2 Place the product on the charging base and clasp the latch locator onto the locating stud. The battery indicator will flash red to indicate the product is charging.

- 3 Before first use, please check if it needs charge, and if needed, charge the product to full power (it needs a maximum of 4 hours to a full charge).



Note: For your safety, please keep the charging base in a dry situation and do not touch the charge port.

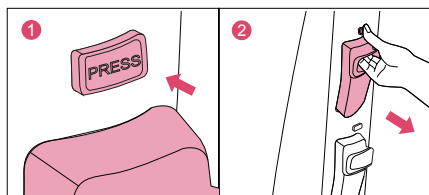
3.2 Remove Large Objects Off the Floor

Before using the product, remove large objects such as toys, power cords and shoes.

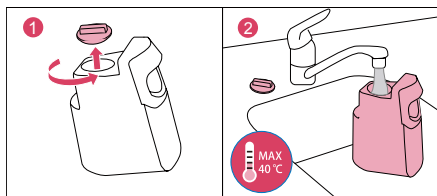
3.3 Filling the Clean Water Tank

Fill the clean water tank before every use.

- 1 Press the release button while pulling the clean water tank to take it out. To prevent the product from toppling over, hold it upright with one hand and take out the clean water tank with your other hand.

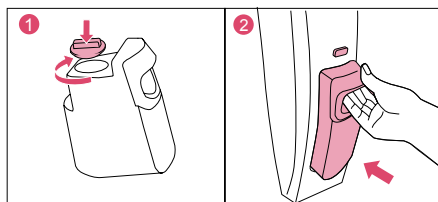


- 2 Turn the cap anticlockwise and remove it from the clean water tank. Fill the clean water tank with cold or warm water (should not be higher than 40°C/104°F). If needed, HIZERO cleaning solution may be added (refer to Section 1.5 **Floor Maintenance**).



Note: If detergent is needed, only HIZERO cleaning solution is allowed. And adding the cleaning solvent/tablet must follow the related use instruction before filling in clean water.

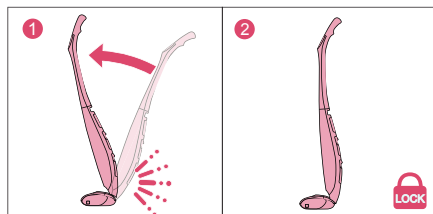
- 3 Turn the cap clockwise to tighten it and install back the clean water tank into the product and make sure it is installed well. To prevent the product from toppling over, hold it upright with one hand and place the clean water tank with your other hand.



Note: To avoid the water tank from sliding out during cleaning, please make sure it is locked.

3.4 Locking the Body

Hold the handle of the product, push it forward lightly until you hear a click which means the product is locked well. Do not push it any further, or it will damage the product.



4 Operation

4.1 Unlock the Body

Lift up the product from the charging base, hold the handle and fix the cleaning head with one foot, then slowly pull back the body until you hear a click which means the body is unlocked. Press the power button to start the product.



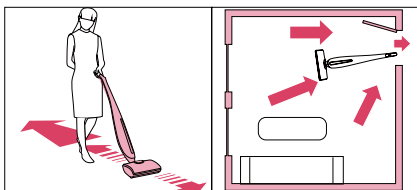
Note: During locking or unlocking, the click sound is normal.

4.2 Start Cleaning

- 1 Make sure that the hard waste to be collected is always in front of the cleaning head, or it may not be cleaned effectively.

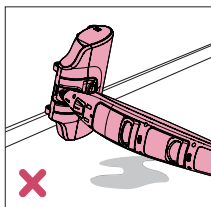


- 2 To avoid inefficient cleaning, the cleaning path shown in the following pictures is recommended.

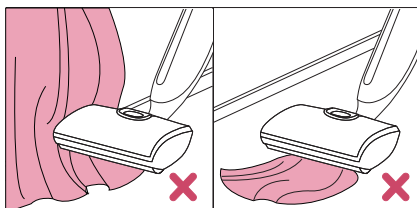


- 3 To remove stubborn stains, move the product back and forth repeatedly.

- 4 Do not lay the product as the picture shows.

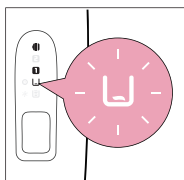


- 5 If the cleaning roller is stuck by foreign objects, press the power button to switch off the product immediately.

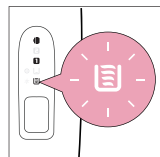


4.3 Indicator for A Full/Empty Water Tank

- 1 The indicator will flash when the clean water tank is empty. At this time, switch off the product and fill the clean water tank (refer to Section 3.3 **Filling the Clean Water Tank**). Then re-start the product.

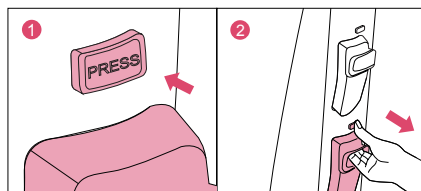


- 2 The indicator will flash and the product will stop working when the dirty water tank is full. Empty the dirty water tank (refer to Section 4.4 **Empty the Dirty Water Tank**) and re-start the product.

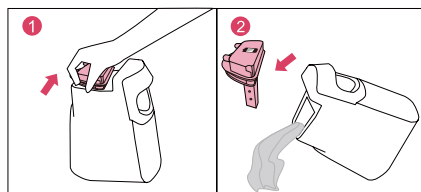


4.4 Empty the Dirty Water Tank

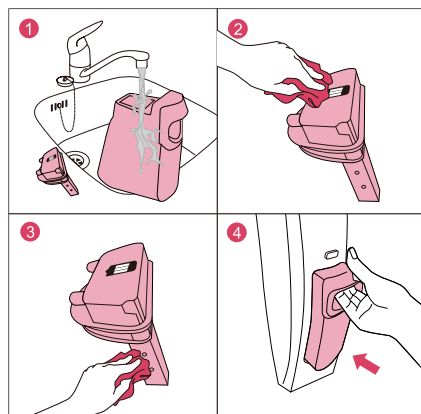
- 1 Press the release button for the dirty water tank to take it out. To prevent the product from toppling over, hold it upright with one hand and take out the dirty water tank with your other hand.



- 2 To easily remove the cap of the dirty water tank, hold the cap and pull it up lightly from the front to the back as the below picture shows. Then slowly pour out the dirty water and be careful of dirty water overflow as well as spilling.



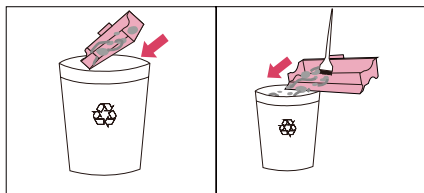
- 3 Rinse the empty dirty water tank and its cap under the tap and wipe the metal sensor plate with a soft and dry cloth. Then place the tank back into the product. To prevent the product from toppling over, hold it upright with one hand and put the dirty water tank with your other hand.



Note: To avoid the water tank from sliding out during cleaning, make sure it is placed and locked well. To avoid any bad connection, make sure to wipe the metal sensor plate with a soft and dry cloth.

4.5 Empty the Trash Container

- 1 Open the cleaning head cover, remove the disposable trash container. And if needed, put a new disposable trash container for the next use.
- 2 If a disposable trash container was not used, take out the trash container and use the cleaning brush to sweep the trash into a dustbin.



a disposable trash container is used

a disposable trash container is not used

4.6 Self-Protection System

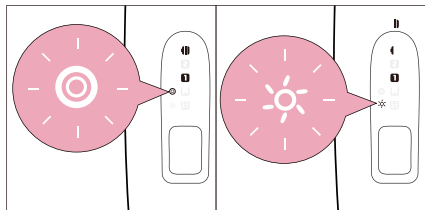
The self-protection system has been designed to identify abnormal conditions. When the system is activated, the product will stop operating immediately to prevent damage to the object and product.

To continue cleaning, follow the instructions below!

4.6.1 Self-Protection of the Cleaning/Brush Roller

The indicator for the cleaning/brush roller on the display panel will flash if the cleaning/brush roller goes wrong.

- 1 Open the cleaning head cover and remove the jammed object.
- 2 If the jammed object is not easy to find, disassemble the brush roller to have a better look.
- 3 After clearing the obstruction, reinstall the cleaning/brush roller and re-start the product. To disassemble and assemble the cleaning/brush roller, refer to Section 7 **Replacing**.



5 Maintenance & Cleaning



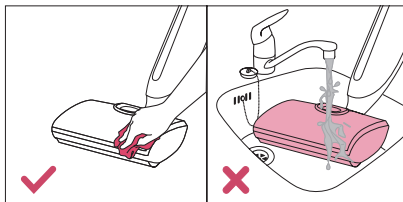
Note: The product must be removed from the charging base and switched off before cleaning or maintaining.

5.1 Maintenance

- 1 Regularly clean the shell of the product with a soft damp cloth. Do not use abrasive cleaning tools like wire balls as well as corrosive detergents to clean the shell in case of scratches or damage.
- 2 To avoid any damage, do not immerse the body in water or any other liquid, nor rinse it under the tap.

- 3 Regularly check the cleaning roller and brush roller.

- 4 Regularly check the power adapter to ensure the power cable is intact and safe to use.

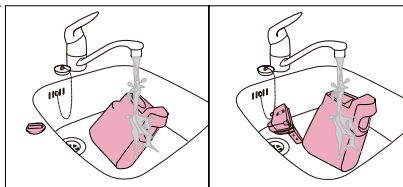


5.2 Clean the Water Tanks

We strongly advise you to empty the tanks before storing the product.

To disassemble and assemble the clean water tank, refer to Section 3.3 **Filling the Clean Water Tank**. To disassemble and assemble the dirty water tank, refer to Section 4.4 **Empty the Dirty Water Tank**.

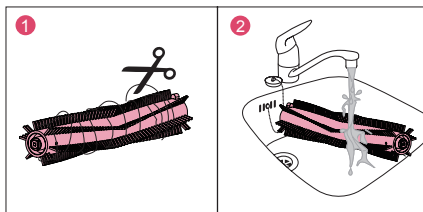
The cap of the clean/dirty water tank can be rinsed under the tap.



Note: Clean the dirty water tank after each use to prevent bacteria.

5.3 Clean the Brush Roller

- 1 To disassemble and assemble the brush roller, refer to Section 7.1 **Replace the Brush Roller**.
- 2 Cut tangled items such as hairs from the brush roller.
- 3 Clean the brush roller with clean water (mixing with some cleaning solution is recommended) and let it dry before reinstalling it.



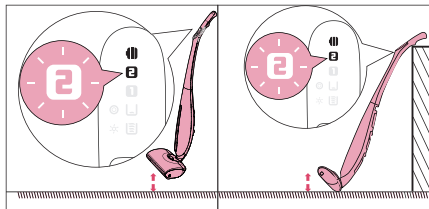
5.4 Clean the Cleaning Roller

Method 1: Make the cleaning roller do self-cleaning.

- 1 Fill up the clean water tank (add some HIZERO original cleaning solution) and install it back, empty the dirty water tank and install it back, lock the product in an upright position and put it on the charging base properly, then unplug the power adapter.
- 2 Start the product and switch to Mode 2. Let the product run by itself until the clean water tank is empty.

3 As per the following images, in addition to doing self-cleaning on the power-off charging base, the product can also do self-cleaning as long as its lifted off the floor (keep the product in an upright position), but both conditions need to be under Mode 2.

4 To achieve a better cleaning effect, multiple self-cleaning is recommended with HIZERO detergent.

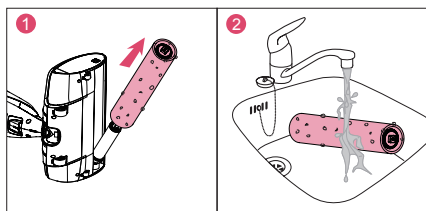


Note: Keep the product upright when the cleaning roller is self-cleaning.

Method 2: Manual cleaning

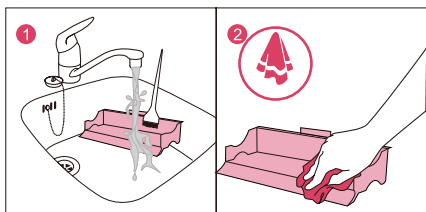
1 Refer to Section 7.2 **Replace the Cleaning Roller** to disassemble the cleaning roller and gently wash it by hand under the tap.

Note: Empty the dirty water tank before the aforementioned steps.



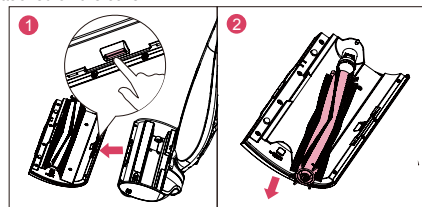
5.5 Clean the Trash Container

1 Take out the trash container, then empty and wash it under the tap. The cleaning brush can be used to sweep off the trash. Let it dry before reassembling.

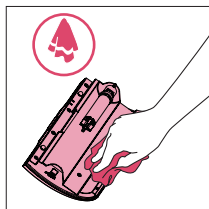


5.6 Clean the Cleaning Head Cover

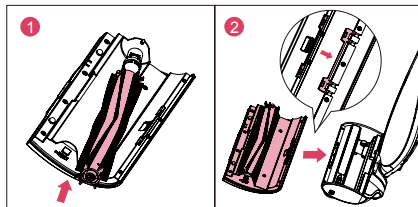
1 Open the cleaning head cover, press the release button to take it apart from the main body, then remove the brush roller attached on the cover.



2 Clean the cover with a soft damp cloth, clean behind the brush roller carefully.

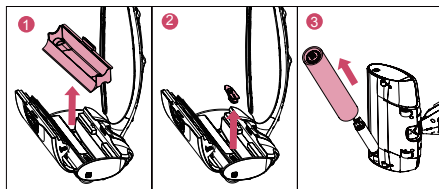


3 Reinstall the brush roller onto the cover, then fix the cover back to the cleaning head.

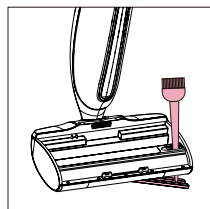


5.7 Clean the Water Sink Drain

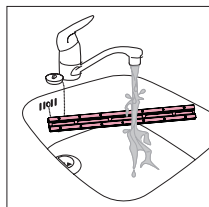
1 Open the cleaning head cover, take out the trash container and filter assembly, then turn the cleaning head over and take out the cleaning roller.



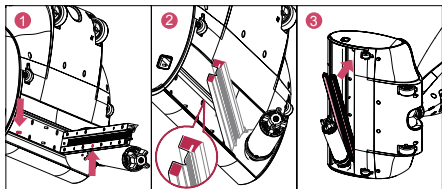
2 Find the removable water sink drain in the groove of the bottom shell, then use the tip of the cleaning brush to gently push the sink through the hole in the nozzle to take the sink out.



3 Clean the water sink drain with clean water, and if necessary, add some mild cleaning solvent.



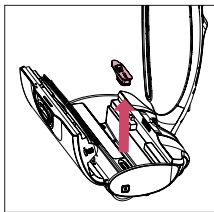
- 4 Install the water sink drain back correctly, make sure the positioning holes on the water sink match rightly with the main body, then slightly press the water sink from left to right to check if it is fixed well, and lastly make both ends of the water sink flush.



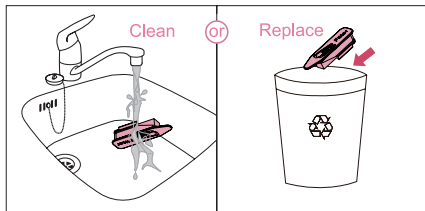
- 5 Finish the rest of the installation steps.

5.8 Clean/Replace the Filter Assembly

- 1 Take out the filter assembly.

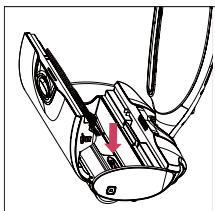


- 2 Clean/Replace the filter assembly.



Note: Recommend to replace the filter assembly every 3 months.

- 3 Put back the filter assembly.



6 Storing & Moving

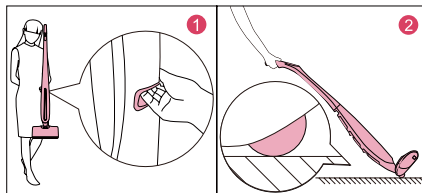
6.1 Storing

- 1 Before storing, switch off the product, lock the body and place it onto the charging base.
- 2 Please clean the inside of the cleaning head before storing to avoid bacteria breeding.

- 3 Before storing, make sure the water tanks are empty.
- 4 If the product will be out of service for above one week, cut off the power, take out the cleaning roller to dry it and then store the product.

6.2 Moving

- 1 Make sure the product is switched off and locked in upright position.
- 2 To move the product, use the hand lifting position on the body's back, or tilt the product backwards to use the back wheels.



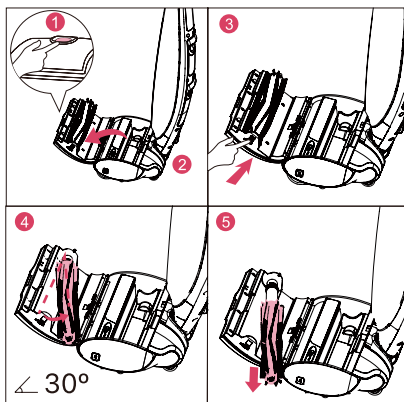
Note: If there is sand or other sharp objects on the floor, do not operate the product to avoid any possible scratch.

7 Replacing

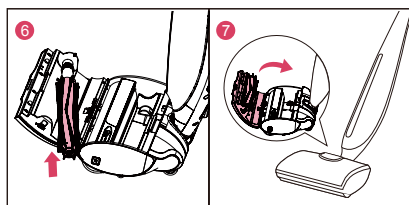
7.1 Replace the Brush Roller

If you want to continue to benefit from the best cleaning results, make sure you always use the original HIZERO brush roller, and we recommend you to replace it every six months.

- 1 Switch off the product and lock it in an upright position.
- 2 Open the cleaning head cover, press the square button at the lateral side to take out the brush roller (Maximum open angle of the drive motor is 30°. Please use appropriate strength and method to avoid any damage).



- 3 Insert a new brush roller onto the drive motor, push and fix it into the cleaning head till the lateral button is in place.

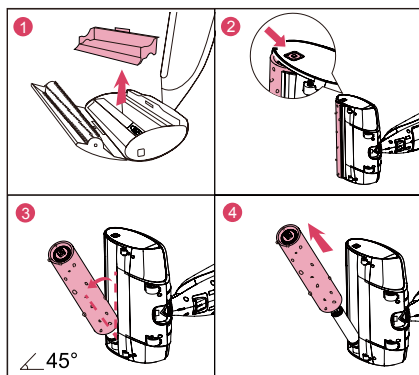


Note: The maximum open angle of the drive motor is 30°. Please operate carefully.

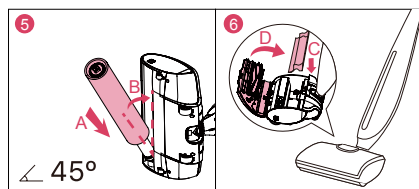
7.2 Replace the Cleaning Roller

If you want to continue to benefit from the best cleaning results, make sure you always use original HIZERO cleaning roller, and replace it every four months.

- 1 Switch off the product and take out the trash container, then empty or take out the water tanks.
- 2 Put the product on its side on flat ground and let the side which has the square button upwards. Press the lateral square button to take the cleaning roller out.



- 3 Insert a new cleaning roller onto the drive motor, push and fix it into the cleaning head till the lateral button is in place. To insert a new cleaning roller, refer to Section 2 **Assembling**.



Note:

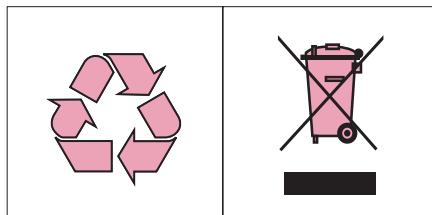
1. The Maximum open angle of the drive motor is 45°, please operate carefully.
2. The used cleaning/brush roller is classified as plastic waste, so please take proper care according to your local environmental protection regulations.

8 Ordering Accessories

To purchase accessories for the product, please visit our website www.hizero.com, or contact HIZERO Customer Service Centre in your country/region.

9 Caring for the Environment

When the product reaches its service life, it is highly advised for you to take the product to the governmental recycle station to contribute to the environment preservation.



10 Warranty & After-sales

For the detailed information of warranty and after-sales service, please visit our website: www.hizero.com or contact HIZERO Customer Service Centre in your country/region. Your 4-in-1 Bionic Mop has been designed and developed with the greatest possible care. In the unfortunate case that the product needs repair, the Customer Service Centre in your country/region will help you by arranging any necessary repairs in the shortest possible time and with maximum convenience.

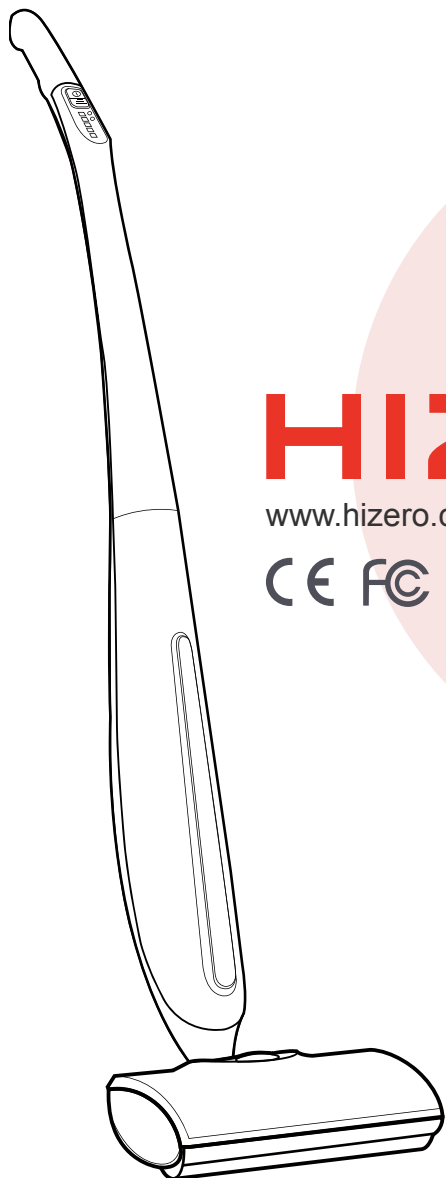


Hizero Technologies Co., Ltd. will not be liable for any damage resulting from improper use or disassembly by customers.

11 Troubleshooting

This chapter summarizes the most common problems you could encounter with the product. If you are unable to solve the problem with the information below, please contact the Customer Service Centre in your country/region or visit our FAQ page on www.hizero.com.

Problem	Possible cause	Solution
The cleaning roller status indicator keeps lit, but the product works normally.	The cleaning roller has reached its service life.	Please replace it with a new cleaning roller, then long press the mode button until the indicator goes out. If a new cleaning roller is not available temporarily, please directly long press the mode button until the indicator goes out.
The appliance leaks water	A. The cleaning roller is not completely soft.	Refer to Section 2 Assembling for the instruction about soaking and softening the cleaning roller. Notice that squeeze excess water before installing.
	B. The cleaning roller deforms or is installed incorrectly.	Check the cleaning roller and its lateral button on the side to see whether there is a misplacement or deformation. If so, reinstall or replace the cleaning roller.
	C. The filter assembly is clogged.	Clean or replace the filter assembly.
The product fails to start.	A. The battery power has run out.	Charge the product and restart it.
	B. The upper body and the lower body of the appliance were not assembled properly.	Reassemble the upper body and the lower body of the appliance.
	C. The battery wasn't inserted properly.	Reinsert the battery.
The brush roller status indicator flashes red.	The cleaning head cover isn't completely closed.	Check the cleaning head cover to see whether it is open and if so, close it well.
The Brush roller status indicator is solid red.	The brush roller is jammed by something foreign.	Disassemble the brush roller to check whether the cleaning roller, as well as its drive motor, is tangled by trash and if so, carefully clean with scissors.
The indicator for full dirty water tank flashes in red while there is no liquid in it.	The dirty water sensor on the cap of the dirty water tank is covered by some dirt.	Open the dirty water tank and remove the cap of it, check to see whether the dirty water sensor on the cap is covered by dirt and if so, clear promptly. At the same time, please regularly clean the dirty water tank to prevent ineffective dirty water monitor.
Product fails to start for the self-cleaning roller though the product is on the charging base.	The charging base is not disconnected from power.	Unplug the power adapter since the product won't start while charging.
There is foam left in the trash container.	Some detergent other than HIZERO original cleaning solution was been used.	HIZERO 4-in-1 bionic mop allows only HIZERO original cleaning solution, so please do not use any unauthorized detergent which may cause unexpected damage to the product.



HIZERO®

www.hizero.com



* 注：此页面无需印刷

产品物料标签			
产品名称	英文用户手册	HIZERO 赫兹科技有限公司	
产品型号	F801	审核时间	
产品尺寸	148mm×210mm	审核人员	
物料编号	M8900000104	设计时间	2019.8.15
图纸版本号	V011	设计人员	李晓平
工艺要求	封面 128g 铜板纸，四色印刷 内页 80g 轻型纸，专色印刷 骑马钉 装订，正反面印刷	其他补充	